



**The Test
Connection, Inc.**

GETTING TO THE POINT

WWW.TTCI.COM

March 2011

Inside this issue:

Boundary Scan News	2
SMH 's FlashRunner Programming News.	2
Teradyne TestStation Panel Testing	2
Upcoming Seminar	3
TTCI Gets Social on Facebooks	3



Agilent Technologies

**Upcoming ATUG
Meeting, TTCI
will be there!**

The Test Connection, Inc. (TTCI) will once again be participating at the Agilent's TUG (Test User's Group) meeting in Santa Clara on March 10, 2011.

Featuring support on the 3070's Cover-Extend Technology (CET), TTCI will be showcasing our test development services. Cover-Extend Technology is a hybrid between VTEP and boundary scan. It draws the best from what each technology offers and enhances the overall capability of Agilent in-circuit test systems.



- Test coverage without test access.
- Lower cost of test with savings from fixturing and ICT test resources
- Improved board quality from reduced strain on strain-sensitive packages (i.e. BGAs)



At the Agilent event, TTCI's Contract Board Test services. TTCI adds value to our services by diagnosing the fault and giving the information in terminology that anyone can understand. If you are dealing with a production team that does not have a flying probe or ICT system, we offer

contract testing services.

More information on this event can be found at:

<http://www.home.agilent.com/agilent/eventDetail.jsp?cc=US&lc=eng&ckey=1957492&nid=-11143.0.00&id=1957492&pselect=SR.GENERAL>.

digitaltest



Agilent Technologies

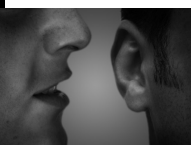
Channel Partner

TERADYNE



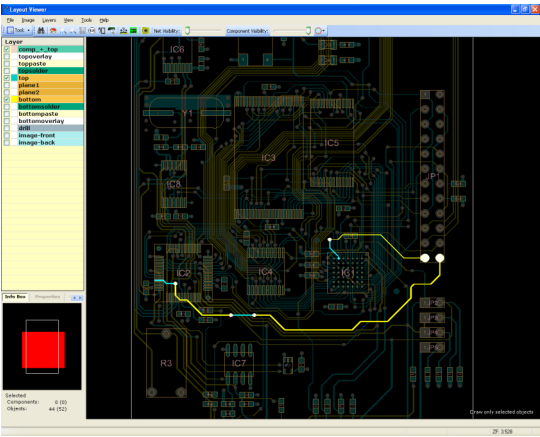
**The Test
Connection, Inc.**

11400 Cronridge Dr.,
Suite H,
Owings Mills, MD 21117
Phone: 410-526-2800
FAX: 410-526-3547
URL: www.ttci.com



Industry Rumor: Agilent is looking to have another meeting sometime in May in Ohio. More details will be listed on TTCI and Agilent's websites.

Visual Debug Tool Helps With Boundary Scan



With electronics packaging getting smaller and more compact, the increasing challenges of tracking down shorts and opens on a Unit Under Test (UUT) are growing. Engineers ask, “How?”

XJTAG has added a solution this year to their boundary scan tool called XJViewer. This graphical feature helps debug faults on tested boards. Networks (nets) can be highlighted and one can perform searches, space measurements and comes standard with the XJRunner and XJDeveloper packages.

For more feature information for the XJViewer, please contact XJTAG (www.xjtag.com)

New Programming Abilities For The Agilent 3070



Have you heard the news? Two of our partners, Agilent Technologies and SMH Technologies, have teamed up to offer a better solution to In-System Programming (ISP) of Flash-based microcontrollers and serial memories during ICT. In late 2009, Agilent introduced the Utility Card to add functionality to the Agilent 3070 test system. Just last month, SMH Technologies has announced their new FlashRunner designed for the 3070's Utility Card called FR3070.

The new Utility Card is an optional pin card that will fit in a card slot in any of the modules on the 3070. It has three cavities in the card that allows users to plug in their own custom electronics for added functional test or functionality during In-Circuit Test. The user can now design and add functional testing and make it part of the test system, which will save on test fixturing costs. One Utility Card can be installed on each module of the 3070, which will take a Driver/Sensor location. Each custom electronics unit comes with the necessary software drivers that can be installed on the 3070 controller.

- Balanced 1:4 Multiplexed 75 Gamma ports and general purpose relays
- Flexible 1:6 multiplexed power supply channels
- 3 Plug-in external electronics slots

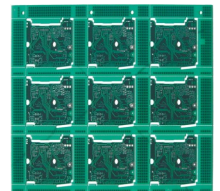
The SMH FlashRunner products offer a range of high-performance, standalone In-System Programmers specific for Flash-based microcontrollers and serial memories. The FlashRunner consist of three series of programmers that are targeted for the production environments and can work either in full standalone mode or controlled by a host system.

- Fastest programming algorithms (as fast as target device's memory technology limit), approved by silicon manufacturers
- Easy ATE integration
- Standalone operations (projects and code images stored on a memory card)
- Supports most ISP protocols (BDM, JTAG, SPI, I2C, MON, ICC, SCI, etc.)

For more product or sales information on the Utility Card, please contact Agilent Technologies (www.agilent.com) and for information on the FlashRunner products, please contact The Test Connection.

Panel Testing on the TestStation

TestStation's Panel Test software supports testing of panelized PCBs in a single test run. The software automatically replicates a single board test program for each duplicate PCB in the panel and provides precise diagnostic and graphical information that accurately identifies failing components and boards. Panelized testing allows manufacturers to increase their production capacity, lower their fixture costs, and reduce handling time.



For more information, contact Teradyne (www.teradyne.com/atd) and ask about "TestStation Panel Test, Serial Numbering, & Split Fixturing Manual" tools.

Upcoming Events

GETTING TO THE POINT

Test Seminar

In April or early May, TTCI will once again be hosting our test seminar, *Getting To The Point*. This FREE one day seminar will feature presentations from industrial leaders like; Agilent Technologies, National Instruments and Teradyne. More details will follow on this announcement.

Some Featured Topics Will Be:

- > *Testability Issues,*
- > *Test Strategies for Complex Assemblies,*
- > *Flying Probe,*
- > *Boundary Scan,*
- > *Speed Sensitive Techniques,*
- > *CAD Data,*
- > *RF Functional Testing,*
- > *Modular Test designs,*
- > *Test Innovations to Watch in the Future,*
and Open Panel Discussions.

The Social Side of TTCI



Don't Forget to check out our TTCI Facebook site. This location will keep you updated on the latest and greatest happenings at TTCI. Become a friend today by 'clicking' on the Facebook logo above.

The Test Connection, Inc.

The Test Connection, Inc. (TTCI) has been supporting the electronics test arena for over 31 years by offering printed circuit board test solutions. Our services range from offering: In-Circuit Test (ICT) development and board testing services for **Agilent 3070** and **Teradyne (Formerly GenRad) TestStation/228X** test systems, Flying Probe development and board testing services on our **Digitaltest MTS500** flying probe test system, Boundary-Scan Test Solutions with the **XJTAG** system and TTCI is the U.S. Distributor of the LED Testing tool: **Feasa LED Analyser**. Also, TTCI's newest offering is the **InteFun 2700**. The **InteFun 2700** is our Functional Test solution that "integrates" PXI/PXIe instrument functional test with In-Circuit Test. Suggestions on what type of news you would like to hear about are welcome.

Please contact newsletter@tci.com with your suggestions or other informational requests on topics you would like to see discussed in **Getting To the Point**.