



# **The Test Connection, Inc.** **GETTING TO THE POINT**

WWW.TTCI.COM

## Introducing a New Product From SMH Technologies

Finally a professional solution for Gang Programming...

### The FlashRunner Quattro!

Previously, a commonly used technique is to join several PCBs in a single panel (big PCB), making assembly and testing of the multiple system easier, faster and less expensive. This is true especially on very small size boards where a single panel (big PCB) can combine a high number of PCBs being assembled. Having several PCBs on the same panel offers advantages but, unfortunately also creates some problems. If the PCBs include MCU or other Flash devices, they probably need to be programmed. SMH Technologies now offers a way to solve the problem of supporting a high number of targets to be programmed, while minimizing test time.

The FlashRunner Quattro will be available soon. For updated information and downloadable utilities about the FlashRunner, please check our website: [www.ttci.com/flashrunner.html](http://www.ttci.com/flashrunner.html). For quotations, contact us at [info@ttci.com](mailto:info@ttci.com) or call 410-526-2800.

### Don't miss the chance to have:

- Four fully parallel in-system programming channels
- Channel multiplexing: each of the four main channels can be multiplexed to 2 or 4 ISP channels (for a total of 8 or 16 ISP channels, respectively)
- Easy integration in all ATE systems
- Galvanic isolation (on the 8 ISP channels configuration)
- Controllable by a host PC or ATE through RS-232, Ethernet or parallel control lines.

October 2009

### Inside this issue:

Folsom's Fast Facts	2
ITAR Registration	2
FEASA's New LED Analyser	2
Flying Probe Takes Off	3
InteFun - A Winning Combination	3

**digitaltest**

 **Agilent Technologies**  
Channel Partner

**TERADYNE**

**JTAG**  
TECHNOLOGIES

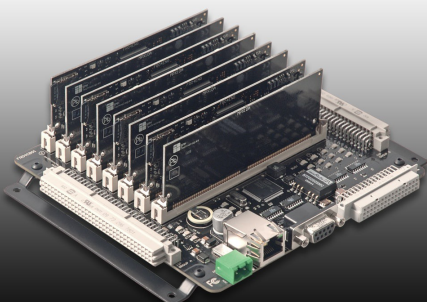
**InteFun**  
2700

### Supported Manufacturers



## The Test Connection, Inc.

11400 Cronridge Dr.,  
Suite H,  
Owings Mills, MD 21117  
Phone: 410-526-2800





## Folsom's Fast Facts:

### 39mil ICT Target Center to Center Separation?

Instead of the notoriously unreliable traditional 39mil testprobes, try QA's Xprobe or IDI's Focal Probe. Each uses a socket under the probe in an extra fixture plate, allowing 50mil probes at 39mil center-to-center separations. Also 50mil separation probes can be replaced by more robust 75mil probes, which potentially can save you money while improving reliability. Be forewarned that the Xprobe and the Focal Probe are not interchangeable, as they have non-compatible socket to probe connection.



The Test Connection, Inc (TTCI) is ITAR registered. Meeting ITAR Certification confirms that TTCI has met requirements pertaining to organization structure, documentation, corporate policy, training and procedures to permit it to handle, use and transfer information controlled by ITAR and the U.S. Munitions list.

TTCI has the right to design tests and test military and aerospace products that the U.S. Department of State declares ITAR certified products. Companies receiving this certification demonstrate that they have knowledge and understanding to fully comply with the Arms Export Control Act (AECA) and International Traffic in Arms Regulations as well as having corporate procedures and controls in place to ensure compliance.



## FEASA Introduces New LED Analysers

Feasa has been working hard on the LED Analyser to enhance the handling of different intensities and has added some new products to market. The NEW LED Analyser has different channel models that are being introduced, along with enhanced brightness functionality and modification of their part numbers.

The NEW LED Analyser has a 2 and 3 channel unit for ICT. This economical solution comes at a time when we need to do more for less. Now we can start adding LED testing for around \$500 (US).



All of the NEW LED Analysers; 2, 3, 10 and 20 channels, are able to measure all the range of intensities, from very dim to very bright, using the same device. Thus, there is no longer a need for the different Standard / High Brightness / Super High Brightness versions in these new models.

Identifying the correct LED Analyser for your application just got a little easier. Yes, easier is always better. Finally, you will notice the new LED Analyser has modified part numbers. The part numbers have changed to help reflect the channel count and the application if it's ICT or Functional. It's just the FEASA # -I or F. I is the ICT model and F is the Functional model.

For updated information and downloadable utilities about the LED Analyser, please check our website: [www.ttci.com/LED.html](http://www.ttci.com/LED.html). For quotations, please contact us at [info@ttci.com](mailto:info@ttci.com) or call 410-526-2800.

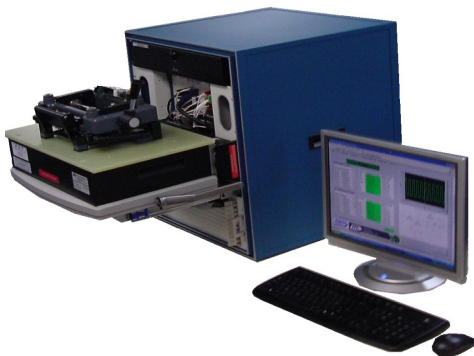
## Flying Probe Takes Off

The Test Connection, Inc. has been seeing an increase in flying probe testing this year. TTCI generates Flying Probe test programs on the Digitaltest Condor and also provides in-house board testing. Test programs can be fully generated in one to two days. Board test services can be turned same day. All faults on the boards tested are verified by a test engineer and recorded on an electronic test log. A copy of the log is sent to your manufacturing team. The Condor is the most advanced Flying Probe tester and the fastest on the market. Digitaltest's C-Link software allows us to generate a test program very quickly and more accurately with their industry leading 63 CAD interfaces which virtually allows TTCI to interface with any CAD system.

For more information about Flying Probe Services, please visit [www.ttci.com/flyingprobe.html](http://www.ttci.com/flyingprobe.html) or email [info@ttci.com](mailto:info@ttci.com).



## InteFun 2700 - A Winning Combination of ICT and Functional

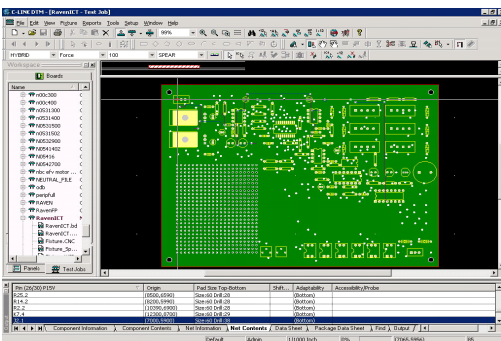


### Functional Test:

InteFun works with PXI and the latest and greatest PXI Express technology. This latest addition to the PXI Express Specification integrates PCI Express signaling into the PXI standard, which increases backplane bandwidth from 132 MB/s to 6 GB/s, a 45 times improvement. It also enhances PXI timing and synchronization features by incorporating a 100 MHz differential reference clock and differential triggers. The PXI Express specification adds these features to PXI while maintaining backward compatibility.

### In-Circuit Test (ICT):

The InteFun can be delivered as a stand alone 19" rack or integrated with an existing ICT solution. The stand alone rack will allow up to 256 hybrid (512 analog) pins. A parallel system bus connects the digital and analog test modules together. Complete ICT system is Non-Multiplexed (1:1) "Real Pin".



Graphical interface allows for easy board debug.

For more information about the InteFun 2700, please call 410-526-2800 or email [info@ttci.com](mailto:info@ttci.com). Also visit us on the web at: [www.ttci.com/intefun.html](http://www.ttci.com/intefun.html).